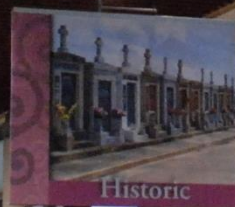


# 2016 ALSA年会 及美国南部城市考察

报告人：徐一大

报告时间：2016年12月23日

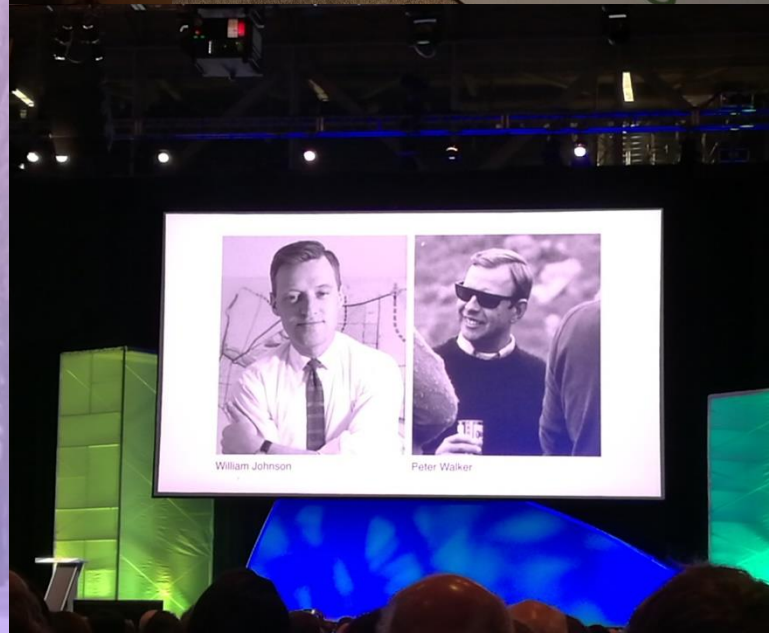
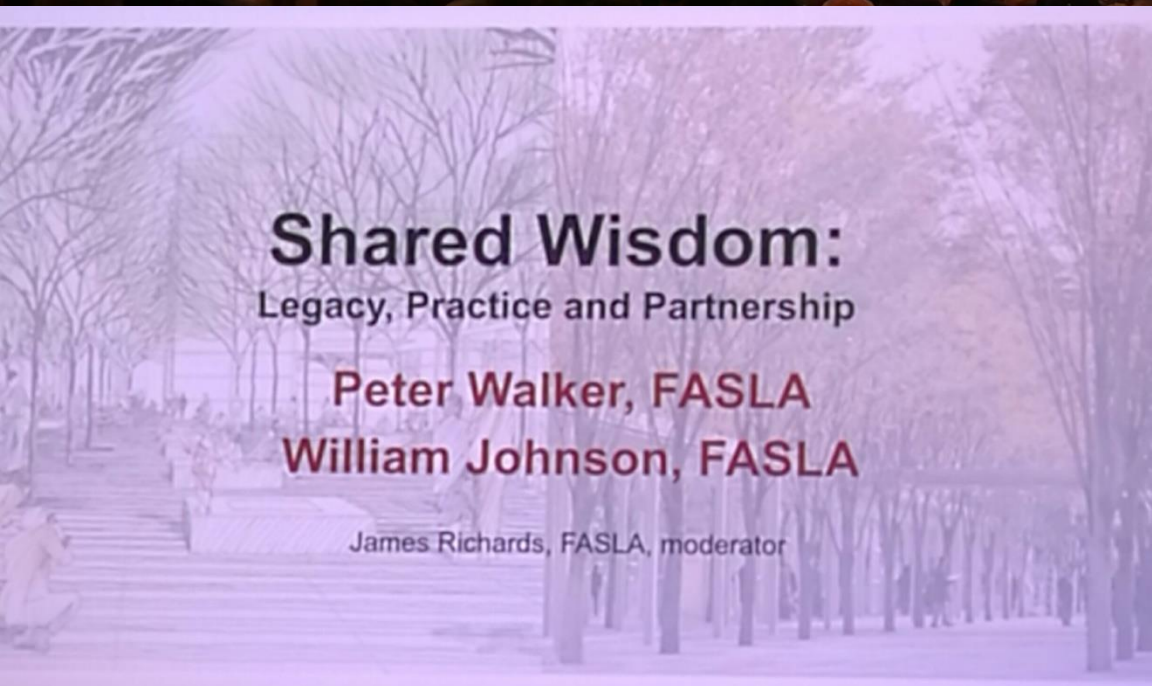
ASLA 2016 A CELEBRATION OF PLACE  
THIS WAY TO  
ASLA  
ANNUAL  
MEETING



ASLA A CELEBRATION OF PLACE  
FS-001  
The New Orleans  
Landscape: Patronage,  
Philanthropy, Public  
Funding, Privatization,  
and Professionals



# 2016ALSA全体会员报告会





# 2016 ALSA 展览会





# 2016ALSA PPN现场讨论





# 2016 ALSA 项目实地考察&公众参与讨论



"No way to live!" - Residential Development on the Agriculture St. Dump (2016)



Gordon Plaza homes on the former Agriculture Street Dump, where families are trapped on contaminated land



Storm-damaged Press Park townhomes abandoned by the Housing Authority of New Orleans (HANO)



Storm-damaged Moton Elementary School abandoned by the Orleans Parish School Board



Gordon Plaza home across the street from HANO's abandoned Press Park townhomes





# 2016 达拉斯植物园





# 2016 达拉斯植物园





# 2016 德州高速公路安全休息站





# 2016 A&M德州农工 景观建筑与城市规划学院





# 2016 新奥尔良市景





# 2016 新奥尔良社区文化





# 2016 新奥尔良ARMATRONG公园





# 2016 FRANCH COUTER & MOONWAY



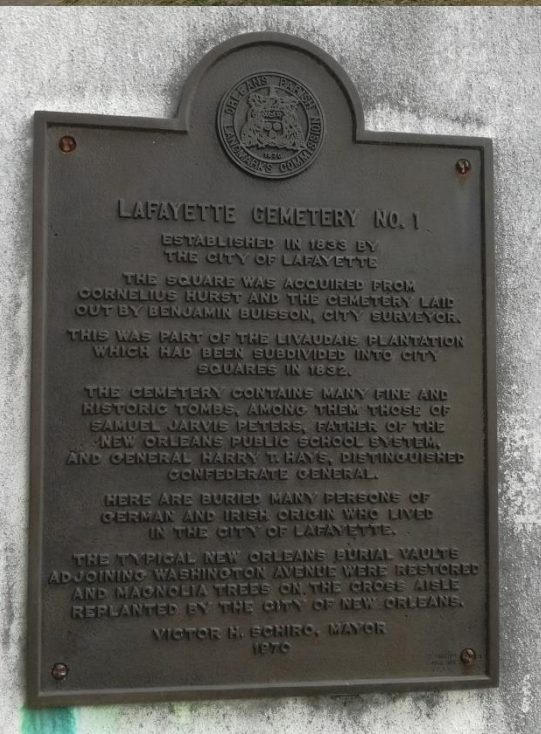


# 2016 新奥尔良 花园街区





# 2016 新奥尔良 花园街墓区





2016 新奥尔良 密西西比河观鳄鱼





2016 新奥尔良 橡树庄园





# 2016 新奥尔良 橡树庄园





# 2016 新奥尔良 橡树庄园





# 2016 贝勒大学





# 2016 LAKESHORE of AUSTIN



## MOUNT BONNELL

RIISING 775 FEET ABOVE SEA LEVEL, THIS LIMESTONE HEIGHT WAS NAMED FOR GEORGE W. BONNELL, WHO CAME TO TEXAS WITH OTHERS TO FIGHT FOR TEXAS INDEPENDENCE, 1836. WAS COMMISSIONER OF INDIAN AFFAIRS IN REPUBLIC OF TEXAS UNDER PRESIDENT SAM HOUSTON. MOVED IN 1839 TO AUSTIN, THERE PUBLISHED THE "TEXAS SENTINEL", 1840. MEMBER TEXAN-SANTA FE EXPEDITION, 1841. WAS CAPTURED BUT RELEASED IN TIME TO JOIN MIER EXPEDITION, 1842. WAS KILLED IN CAMP ON RIO GRANDE, DEC. 26, 1842.

FRONTIERSMAN W.A.A. "BIGFOOT" WALLACE KILLED AN INDIAN HE MET FACE TO FACE WHILE CROSSING A NARROW LEDGE 50 FEET ABOVE RIVER, 1839. HE ALSO TOOK REFUGE IN A MOUNT BONNELL CAVE TO RECOVER FROM "FLUX", BUT WAS MISSING SO LONG THAT HIS SWEETHEART ELOPED.

IN THE MID-1800'S MORMONS BUILT A MILL ON THE COLORADO RIVER AT FOOT OF MOUNT BONNELL. MILL WAS DESTROYED BY FLOOD AND THE MORMONS MOVED ON WEST.

MOUNT BONNELL WAS SITE OF PICNICS AND OUTINGS IN 1850'S AND 1860'S, AS IT IS TODAY. LEGEND HAS IT THAT AN EXCURSION TO THE PLACE IN THE 1850'S INSPIRED THE POPULAR SONG "WAIT FOR THE WAGON AND WE'LL ALL TAKE A RIDE AS A TUNT IN 1896, MISS HAZEL KEYES SLID DOWN A CABLE STRETCHED FROM THE TOP OF MOUNT BONNELL TO SOUTH BANK OF THEN LAKE McDONALD BELOW.

(1969)



# 2016 德州大学AUSTIN分校



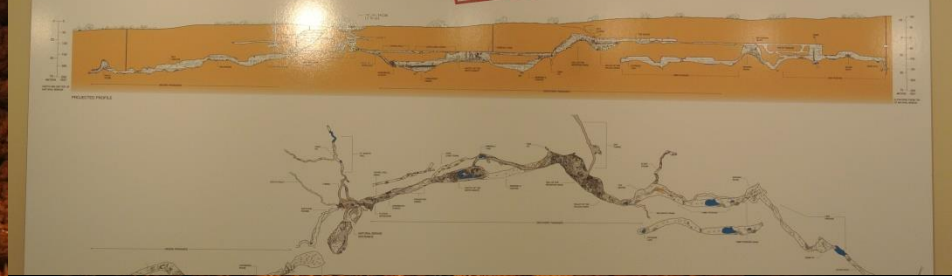


# 2016 汽车博物馆





# 2016 NATURE BRIDGE 溶洞





# 2016 玻璃博物馆











## 2016 德州独立纪念地ALAMO







# 2016 丛林餐厅





# 2016 TOP GOLF 练习场





2016 莱斯大学



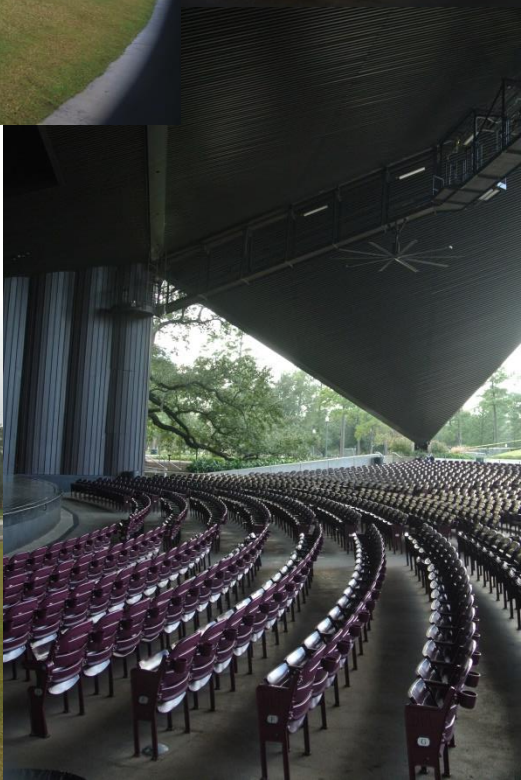


# 2016 休斯顿城市公园DISCOVERY GREEN Park





# 2016 休斯顿城市公园 Hermann Park







爱上海，爱生活  
越生态，悦未来

上海大越，为您提供可持续的人居环境开发建设顾问服务

上海大越人居环境科技发展有限公司

SHANGHAI DAYUE HUMAN SETTLEMENT ENVIRONMENT SCIENCE AND TECHNOLOGY DEVELOPMENT LIMITED COMPANY



2016.12